



product modification

040-0541-00

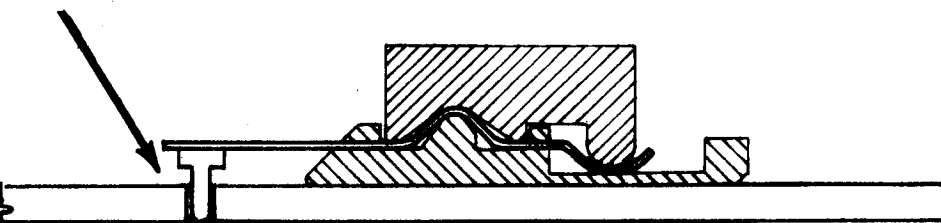
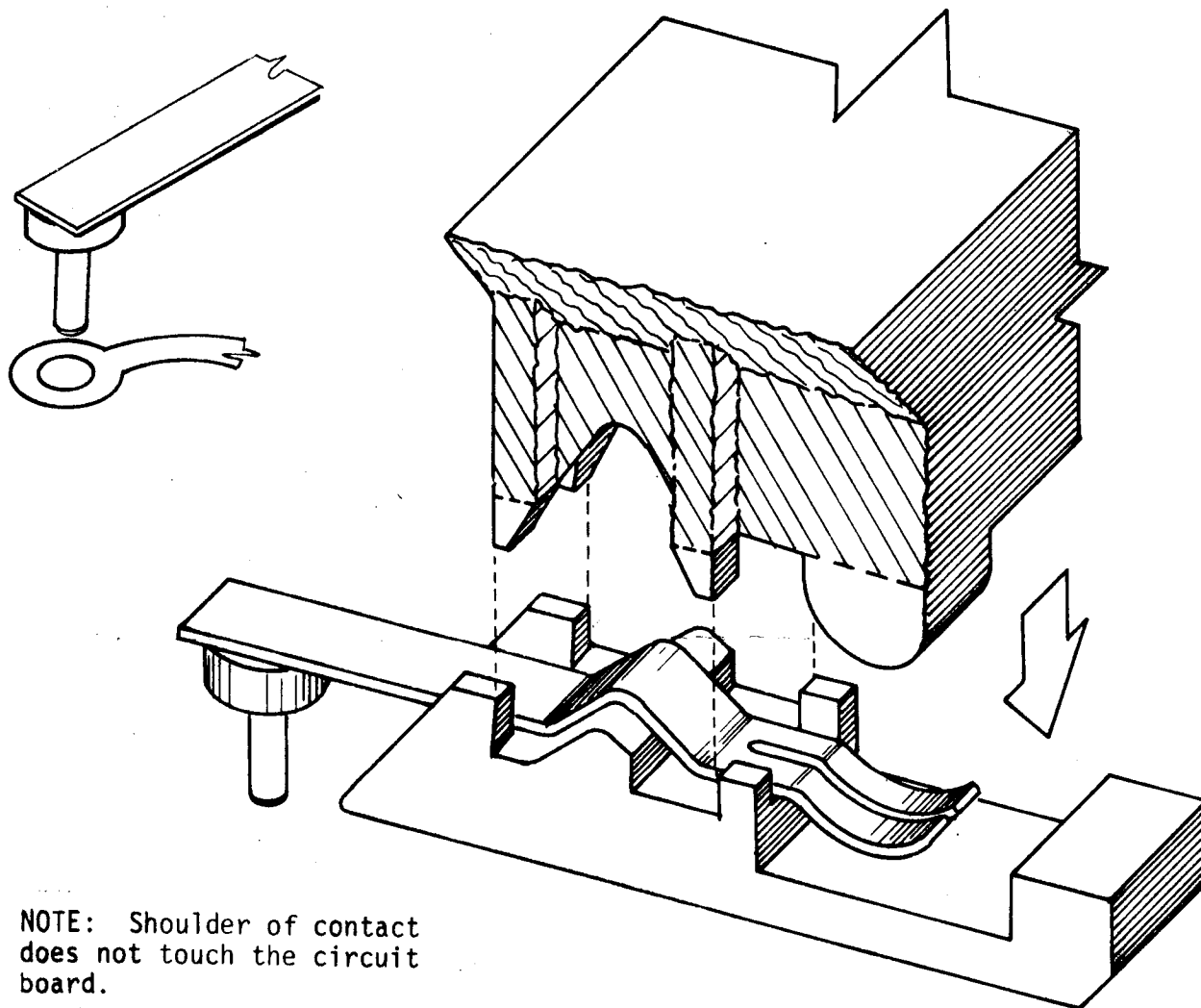
Type - See Below

CAM SWITCH REPAIR KIT

For TEKTRONIX® Type Instruments w/cam switches
All Serial Numbers

Modification Kit, PN 040-0541-00, provides parts and instructions for replacing one to twenty contacts used in the new cam switches.

To insure proper alignment between the contact and the circuit board it is recommended that contacts be replaced one at a time.



PARTS INCLUDED IN MODIFICATION KIT:

Quantity	Part Number	Description
1 ea	003-0649-00	Contact Replacement fixture consisting of: 1 ea single contact lower support unit 1 ea triple contact lower support unit 1 ea contact alignment unit
1 ea	003-0652-00	Desolder tool
20 ea	131-0604-00	Contact, cam switch

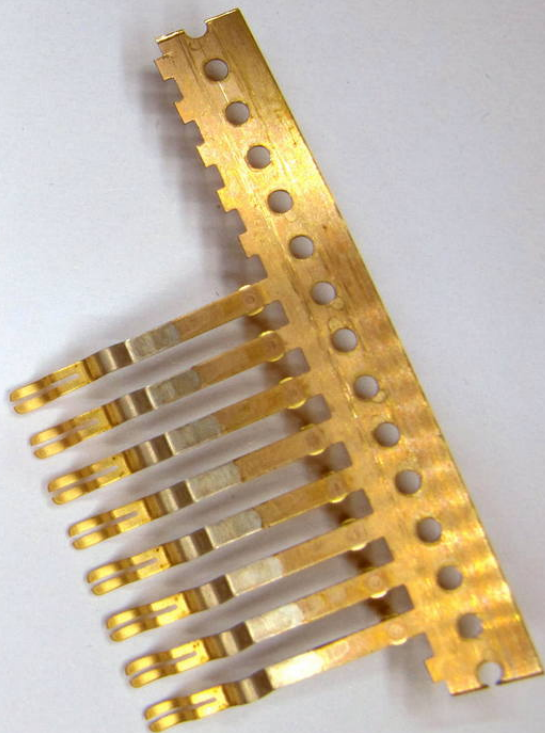
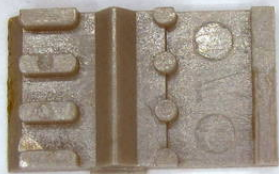
INSTRUCTIONS

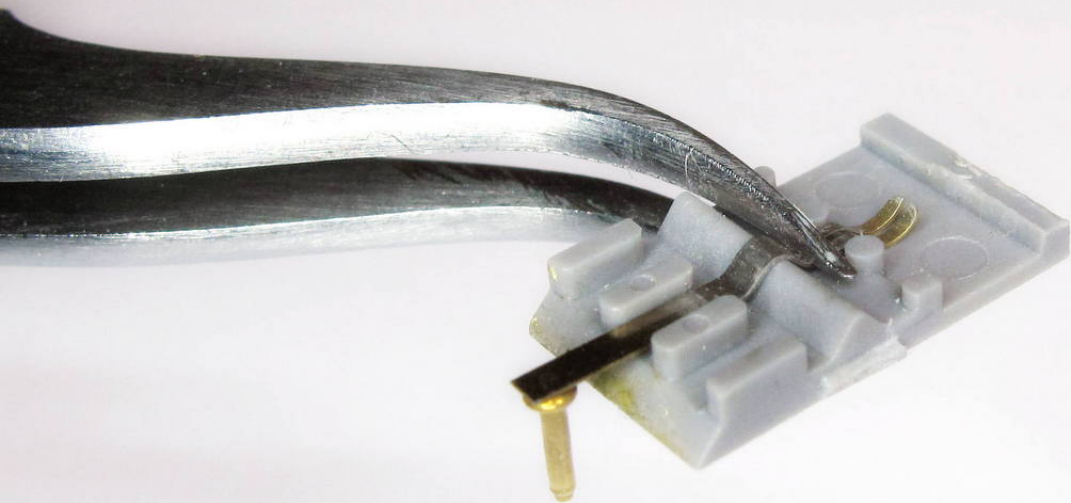
CAUTION! Observe the following!

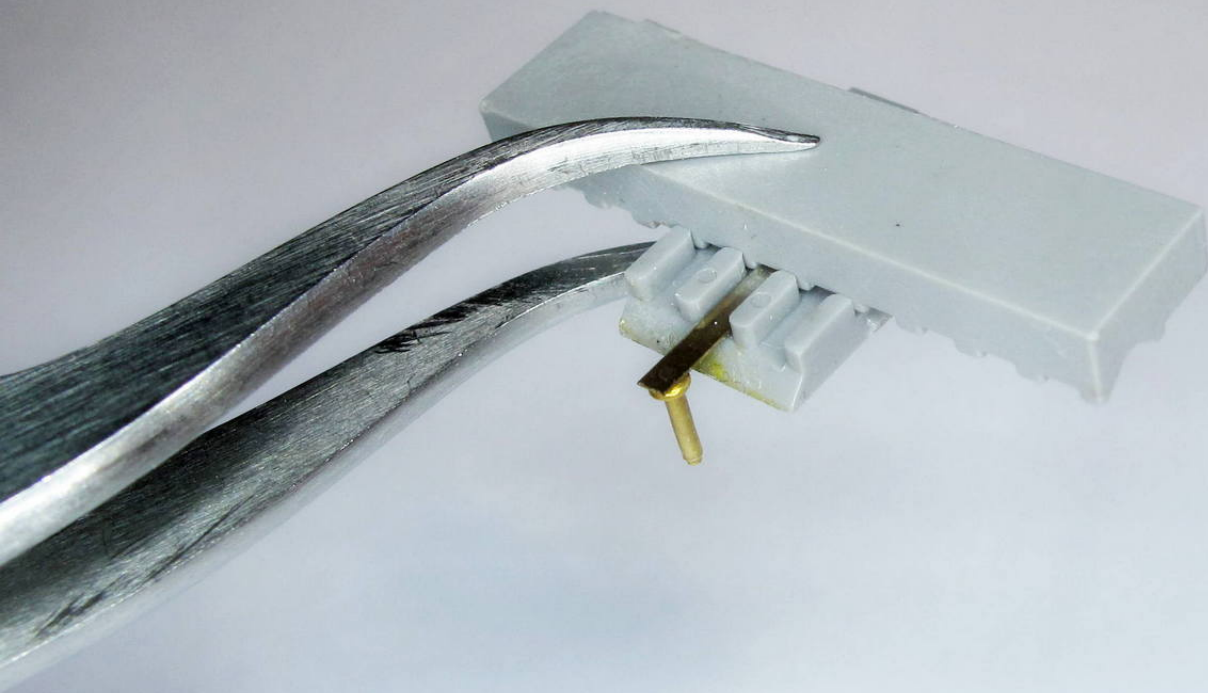
- A) REMOVE AND REPLACE CONTACTS ONE AT A TIME.
- B) Avoid soldering on the contact side of the circuit board.
- C) Use a 15 or 20 watt soldering iron.
- D) Refer to your Instruction Manual for procedure to remove the cam switch to be repaired.
- E) When soldering on contact side of board DO NOT GET SOLDER ON THE LEAF OF THE CONTACT.
- F) When removing a contact that is in a series of contacts soldered to a common pad DO NOT OVERHEAT.
Overheating may cause adjacent contacts to go out of alignment or fall completely out.
- G) After installing new contact(s) CHECK CONTACT ALIGNMENT.
If the contact is in a connected series check adjacent contacts for alignment also.

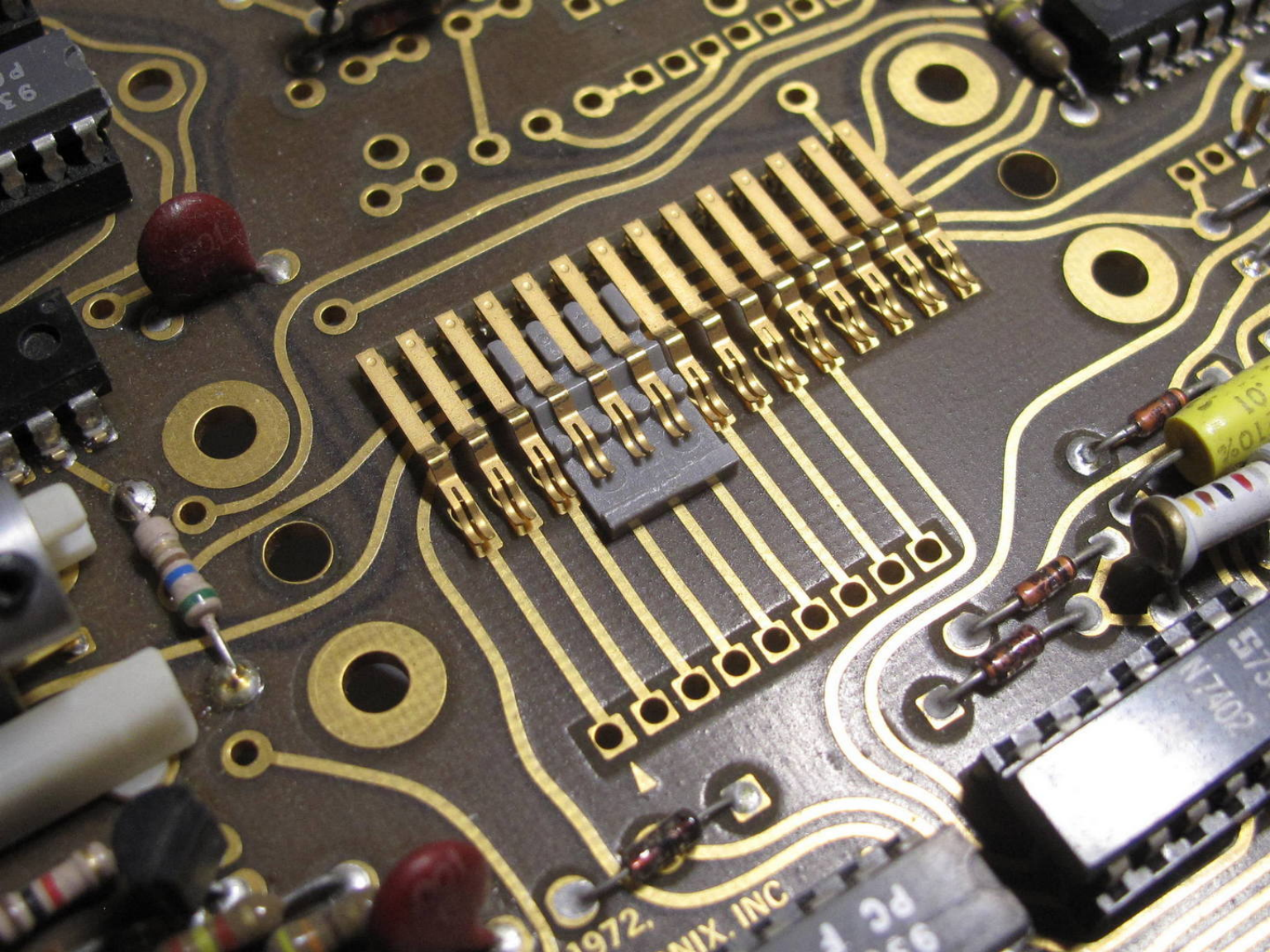
- () 1. Remove cam from circuit board.
- () 2. Remove parts as necessary for access and unsolder a contact to be replaced.
- () 3. Remove excess solder and clean out the hole in the circuit board.
- () 4. Install new contact and align as follows:
 - a) Place the single or triple lower support unit under the new contact. See Drawing.
 - b) Place the contact alignment unit on top, oriented as shown in Drawing, and solder contact in place.
- () 5. In a similar manner (steps 2-4) replace any other damaged or defective contacts.

JT:ls









1972. NIX. INC